

Figure 1: Existing Conditions
 ARCN Development, LLC



SWBR

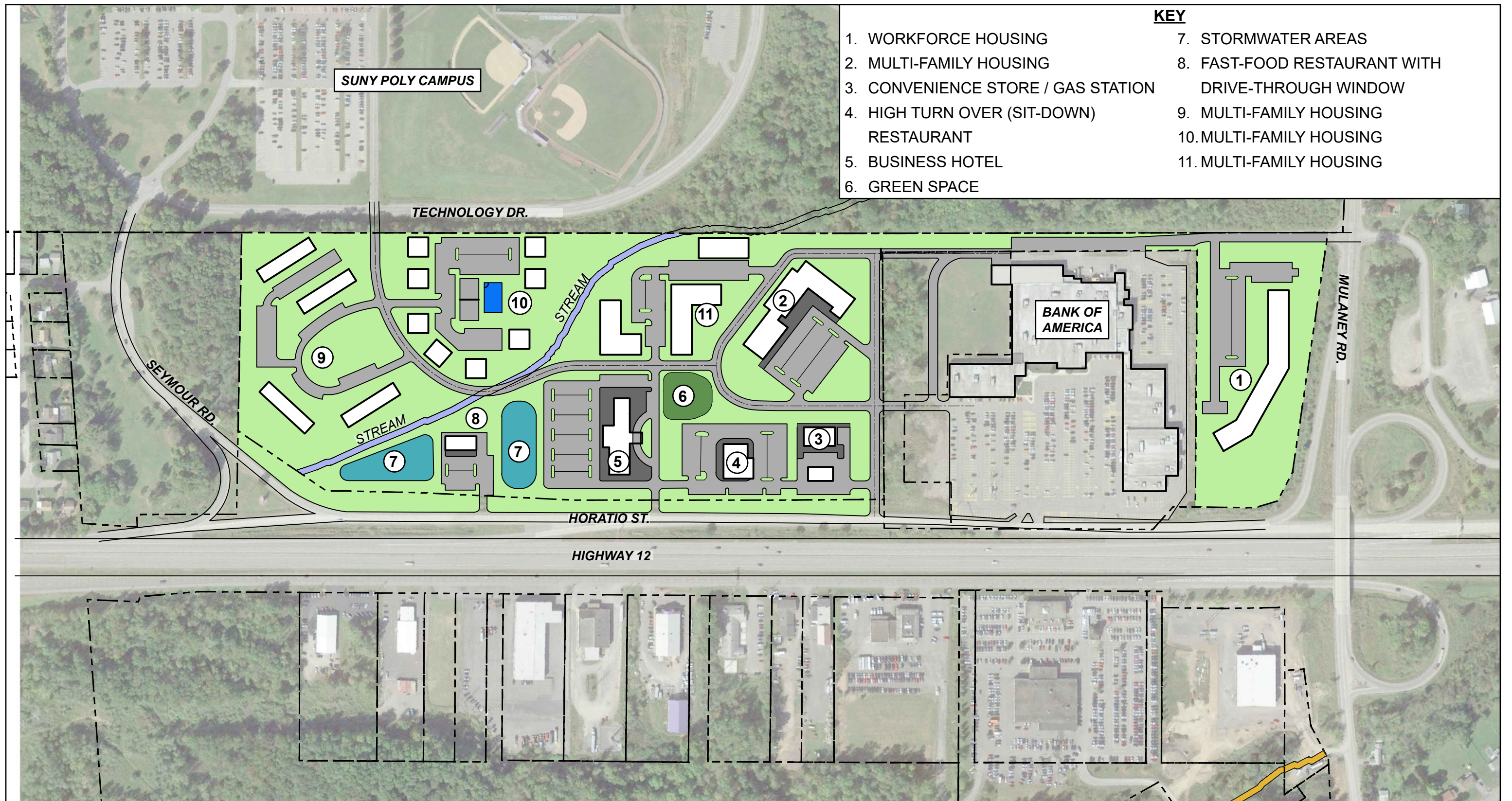
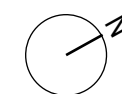


Figure 2: Master Plan
ARC Development, LLC



SWBR

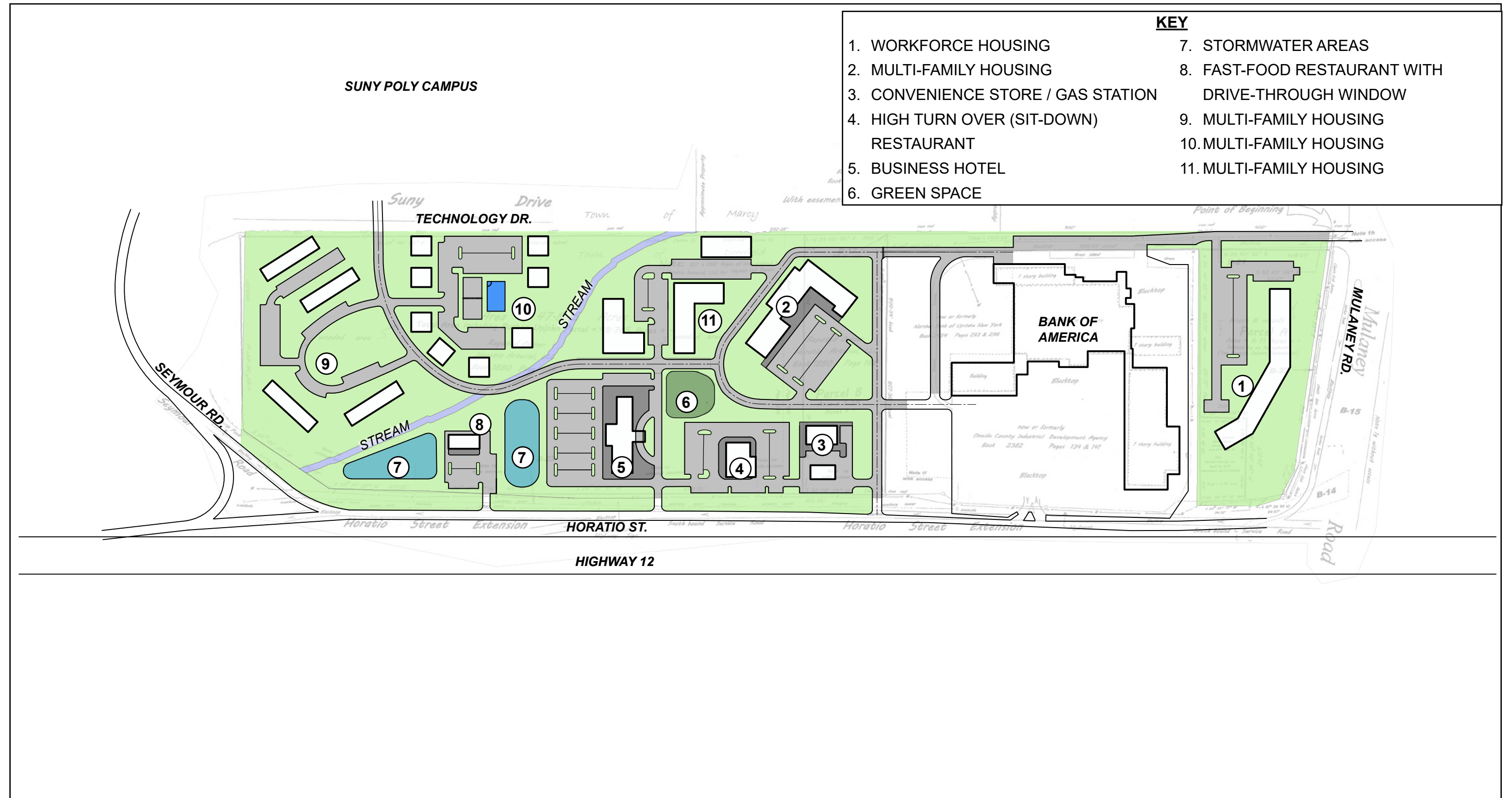
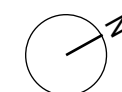


Figure 3: Master Plan w/ Survey Boundary
 ARCN Development, LLC



SWBR

NOTES:
1. ESTIMATED 2024 COUNTS BASED ON
2018-2019 AADT TRAFFIC COUNTS

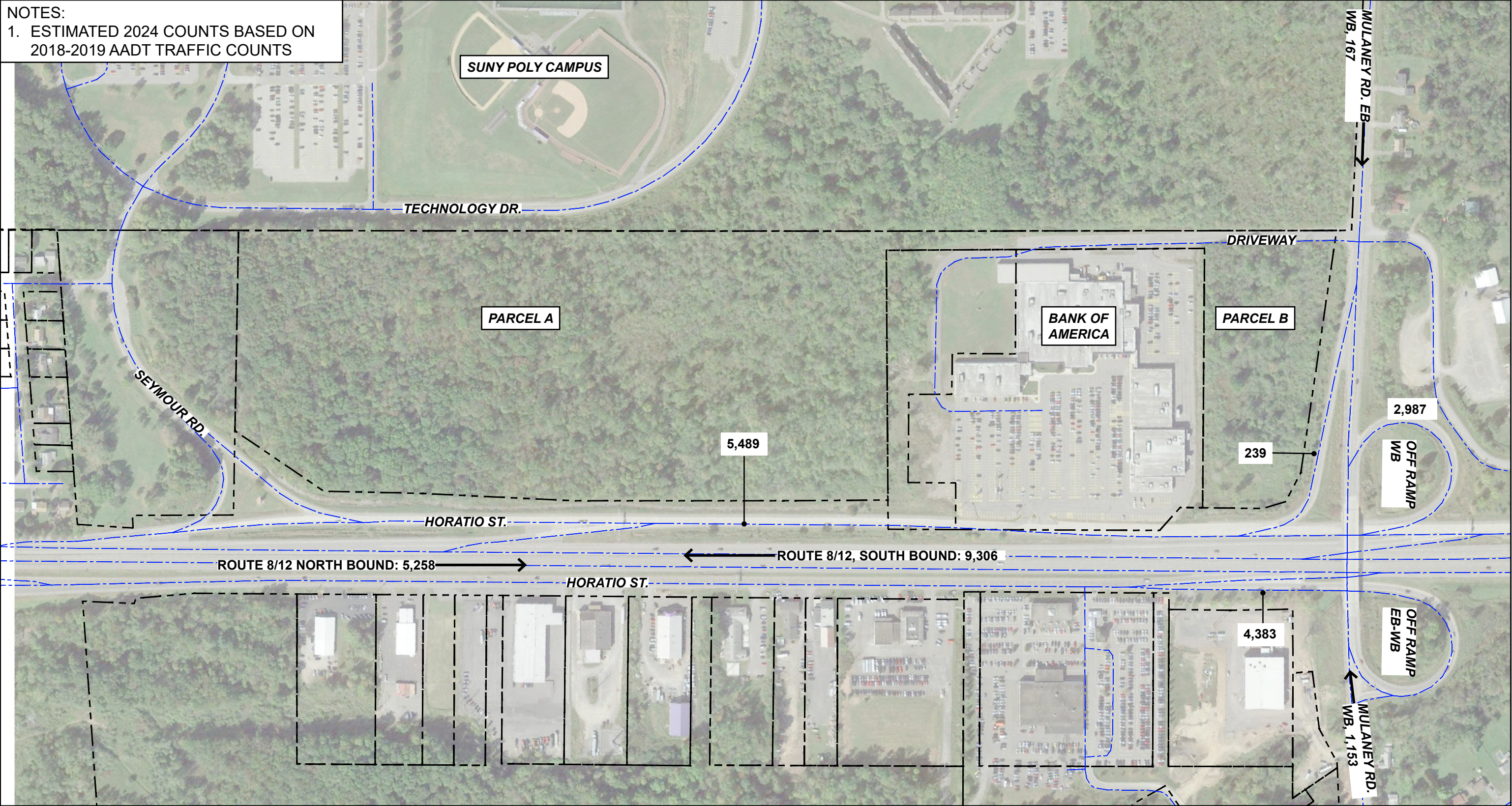
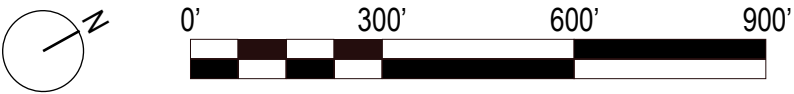
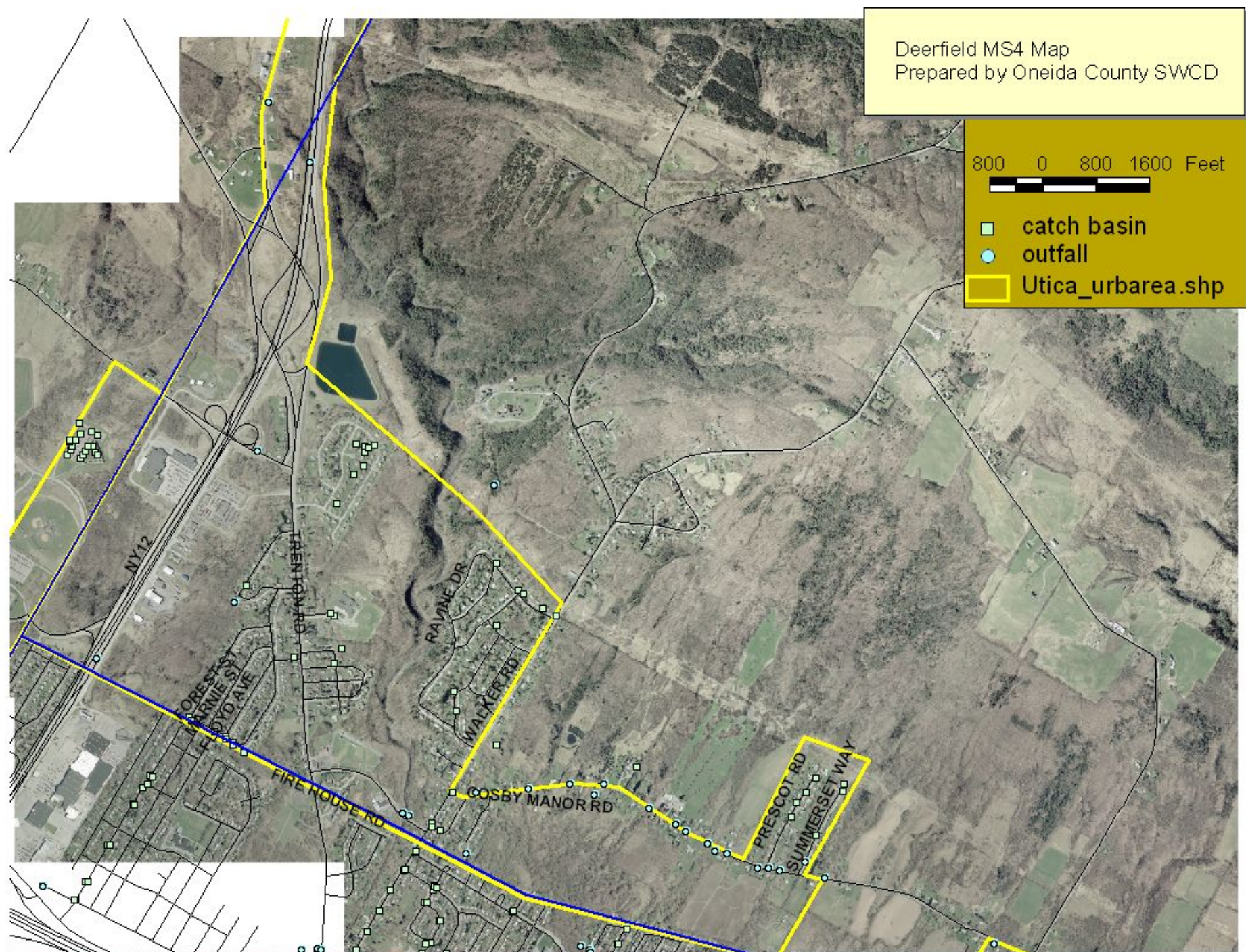


Figure 4: Traffic Counts
ARCN Development, LLC



SWBR



Deerfield's Stormwater System was originally mapped in 2006 for location of catch basins and culverts.

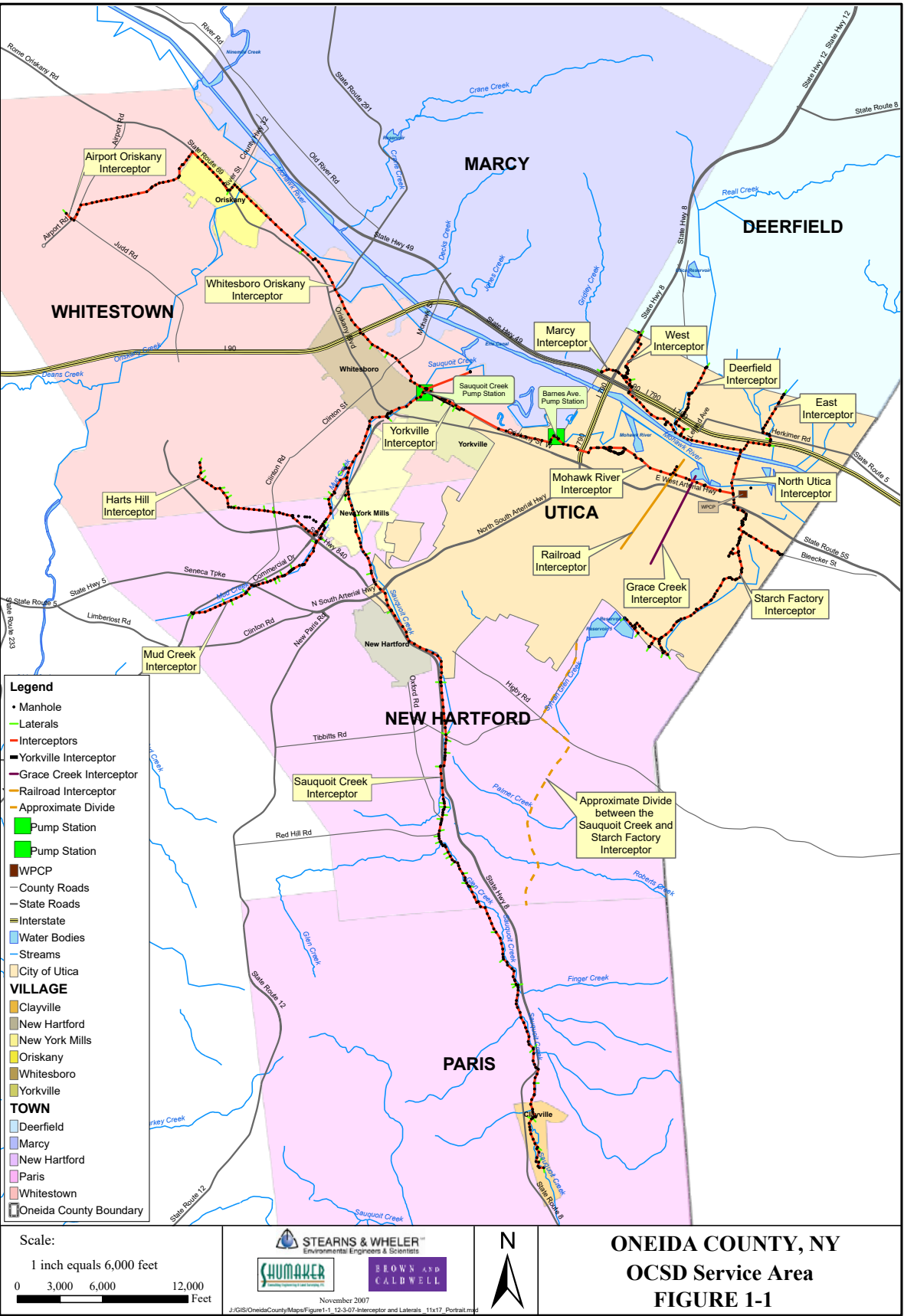


Figure 5: MS4 Maps + Sewer District
ARCN Development, LLC